

ROBUST HIGH QUALITY FLOW MONITORS

ELETTA
STEAM



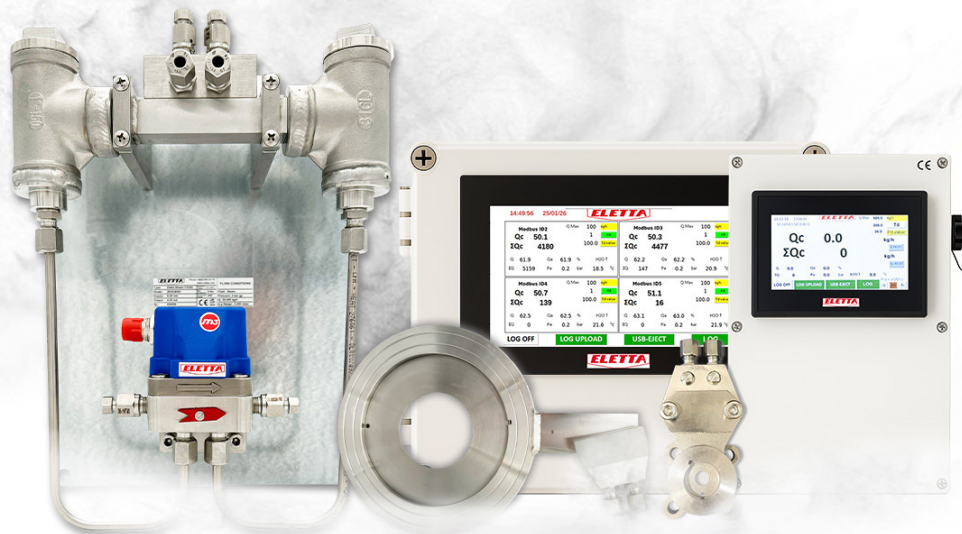
Reliable Steam Flow Measurement

Introducing Eletta Steam, a robust, cost effective design for steam flow measurement. Designed for accuracy and ease of use, Eletta Steam is your go-to solution for all of your steam flow monitoring needs.

Whether it be determining your efficiency of your boiler steam flow or monitoring steam flow in your sterilization lines, Eletta Steam has you covered.

Eletta has been manufacturing high quality flow measurement instrumentation for over 75 years and are well known in the industry for superior quality and support. Eletta products are used where operational safety demands, efficient supervision, and rugged installation is required.

The Eletta Steam Flow Steam system is based on the proven and dependable differential pressure principle, using an orifice plate as the primary flow element.



How it Works

Eletta Steam consists of two parts: a stainless steel Base Unit, and a Pipe Section. The Pipe Section is in stainless steel and is available for pipe sizes from 1/2" up to 20" and the Orifice Plate is sized to accommodate the customer's requested flow range and the process operating conditions. The Base Unit consists of a mounting condensing pots and a Control Section. The Control Section is connected to the Base Unit via 6mm stainless steel tubings.

Key Features

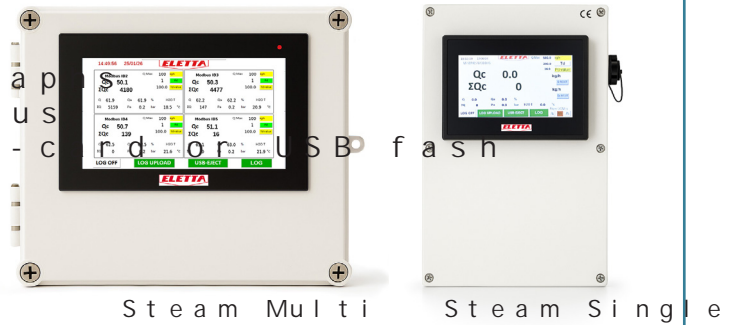
- For pipe sizes from 1/2" up to 20"
- 4-20mA Modbus TCP/RTU
- Alternate Control Unit
- No Moving Parts
- Ease of Installation



User Interface HMI

- Touch-screen Display
- Historical Trends & Graphs
- Read flow data via Modbus
- Transfer logfile via SD-card or USB flash

For installations of more than one Control Unit the Steam Multi User Interface can be used to connect up to 4 Control Units.



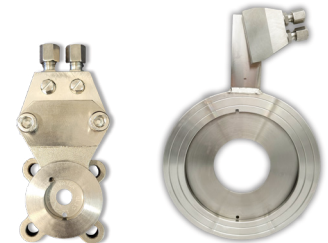
Base Unit

- Mounting Plate
- Condensing Pots
- Control Unit - M-series
- 6mm Stainless Tubing



Pipe Sections

- 1/2" to 20"
- Stainless Steel
- Threaded or Flanged
- 6mm Tubing Connections
- Shut-off valve



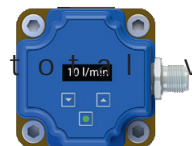
Elettta Steam Control Unit options

Marine certified - Cover in Stainless Steel
 Differential pressure transmitter certified for marine applications, in accordance with DNV classification for high-speed and light craft. It has been approved for installation on vessels classified by DNV.



Rate Total Display

Visualization of the flow rate and flow total values with non-steam compensation.

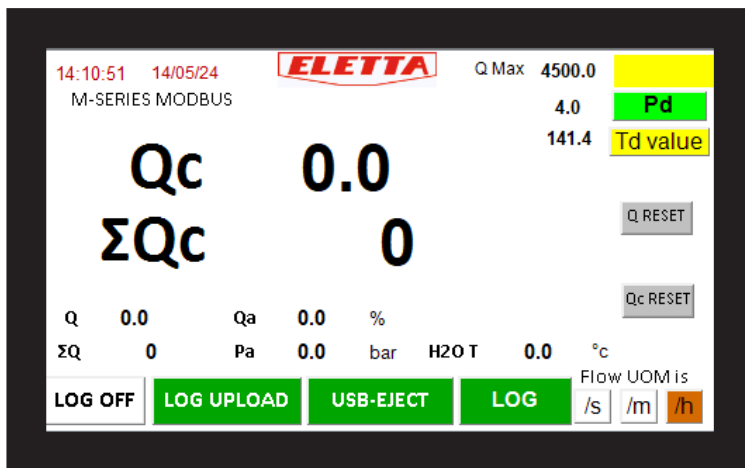


Product information - User Interface Scr

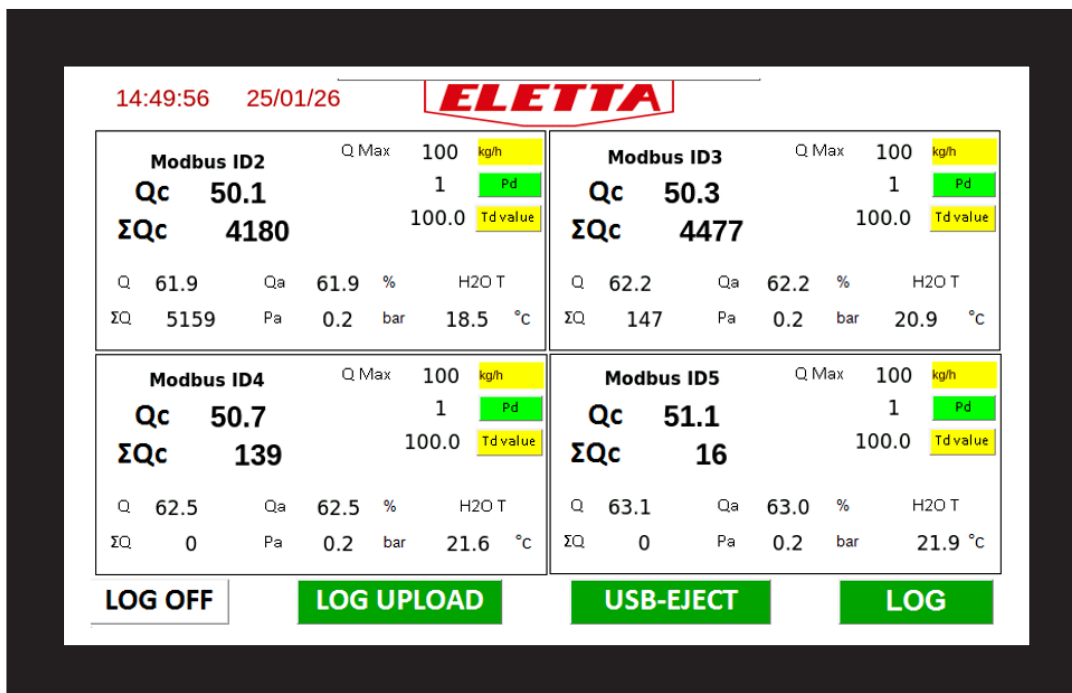
The User Interface display the following values:

- Q_c is the compensated measured mass flow.
- Q_c TOTALIZED is the compensated measured mass flow totalizer.
- Q measured flow.
- Q TOTALIZED measured flow totalizer.
- Q_a Percentage measured flow of Q max sent from the Control Unit.
- P_a is the Static pressure sent from the Control Unit.
- $H_2O T$ is the Sensor Temperature of the water in control.

User Interface Screen - Single



User Interface Screen - Multi



Technical data

| | |
|---|--|
| Flow range | Steam: will be calculated according to |
| Flow turndown | 10: 1 |
| Cover. Control Unit | PA 12 Grilamid with cassette or optional |
| Wetted Materials | Stainless Steel & FPM |
| Min pressure* | - M310: 1 bar(g) (14,5 PSI) - M325: 1,75 bar(g) (25,4 PSI) * Minimum pressure to get a proper re provided there is a flow in the system |
| Max pressure | - M310: 10 bar(g) (145 PSI) - M325: 25 bar(g) |
| Temp. Control unit | - 10°C to 100°C. (Sensors compensated |
| Ambient Temp - With display | - 10°C to 70°C |
| Max. temp. Pipe section | - 10°C to +230°C (+14°F to 446°F) |
| Process connections: | Threaded: 1/2", 3/4", & 1" Flanged: 1/2" up to 20" |
| Accuracy | +/- 0,5 - 1% FS of the default differenti |
| Communication User Interface | Modbus RTU/TCP optional analog 4-20 mA |

For complete specification of various models please

Certificates



PED
2014/68/EU



CONTACTS

Sweden
+46 (0) 8-603 07 80
info@eletta.com

France
+33 470 996 560
contact@eletta.fr

Germany
+49 30 757 66 566
info@eletta.de

USA
+1-412 912 6900
info.usa@eletta.com

China
+86 106 718 9590
eletta@eletta.com.cn

India
+91 120 429 2444
india@eletta.com

Indonesia
+62 811 118 9318

